



**SKY HOME**  
Residences

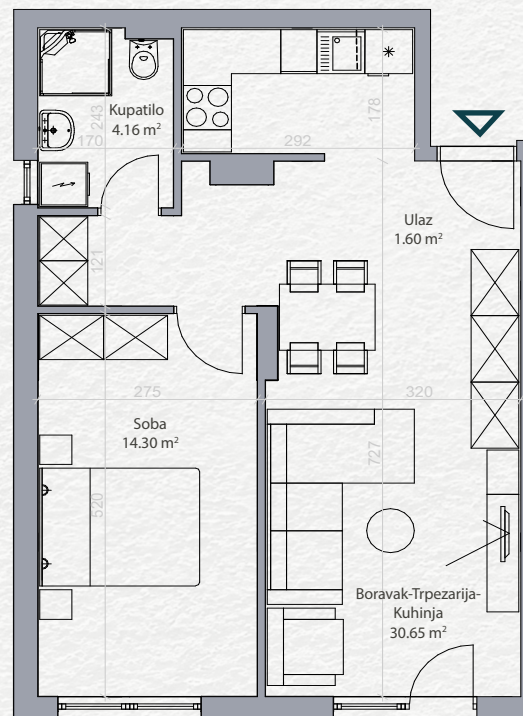


Stan 2

Prizemlje

Dvosoban

PROSTORIJA	POVRŠINA
Ulaz	1.60 m <sup>2</sup>
Kupatilo	4.16 m <sup>2</sup>
Boravak-Trpezarija-Kuhinja	30.65 m <sup>2</sup>
Soba	14.30 m <sup>2</sup>
	<b>50.71 m<sup>2</sup></b>



Položaj stana na osnovi



Položaj stana na fasadi